

Silverton Primary School

Monday 26th June -

Friday 7th July

Opening Hours: 7am to 6pm

Held in the BER/Gym building.

Access from Jackson's Road ONLY

VACATION CARE

Cost: \$55 per day per child

Childcare Subsidy applies to fees.

Monday 26th June

Baking Day

Banana/choc chip muffins, ANZAC slice

Paper Plane design/making
and flying competition



Monday 3rd July

COST \$20

STEM Incursion

Bricks4Kidz:

Includes building with bricks and motorised technic

Theme: Amazing animals

COST \$20

NAIDOC Week : Activities all week

Tuesday 27th June

COST \$15

Basketball incursion



Be here by 10am.

COST \$15

Bead Craft

Keyrings, bracelets, necklaces and more.

Tuesday 4th July

COST \$5

Camping Day



Tent building

Sausage sizzle lunch

Camping activities

Making S'mores and more

COST \$5

Wednesday 28th June

COST \$5

Sushi making lessons

Let's explore different ways to make sushi

COST \$5

Hama Beads: creations

Wednesday 5th July

COST \$15

Hip Hop Incursion—Crazy Hair Day

Be here by 10am

Come with crazy hair,

decorate on the day, face painting.



Thursday 29th June

Technology Day

Bring your own tech to play,
or use OSHCare's iPad



Learn how to Draw

Lessons with John

Thursday 6th July

Recycle Box Art

What can you create? Doll house, box car or something
from your imagination?



Make homemade soup for afternoon tea.

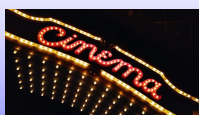
Friday 30th June

COST \$25

Movie Excursion

Heading off to Dandenong Plaza to see a movie.

Times and movie to be confirmed closer to the day.



COST \$25

Friday 7th July

Technology Day

Bring your own tech to play,
or use OSHCare's iPad

NAIDOC Week : BINGO

CONTACT DETAILS: Phone: 9795-5033 ext 2

Mobile: 0429 784 199

Email: oshcare@silverton-ps.vic.edu.au



VACATION CARE

GENERAL INFORMATION

Vacation Care will be held in the BER/Gym building

Access will be from Jackson's Road entrance ONLY.

Sign in/out will be in the foyer, near the kitchen.

Program activities are subject to change.

Incursions are compulsory and have an additional cost.

Breakfast is available from 7am to 8:30am.

Afternoon tea including fruit & snack at 3:30pm.

Based on our COVID safe plan we will adhere to social distancing and maintain a high level of hygiene.
We will wash hands regularly and have hand sanitizer readily available.

Children need to bring:

- A healthy cut lunch and morning tea every day
 - High risk foods MUST be stored safely
 - A named/labelled refillable drink bottle
- Clothing/Shoes that are sensible and appropriate for the weather and activities

Children are NOT to bring or wear:

- Thongs, open toed shoes, sandals or singlets
 - Glass bottles or cans
- Cameras, mobile phones or spending money
- No Takeaway food eg McDonalds, KFC

BOOKING AND PAYMENT INFORMATION

Booking form is available from OSHCare or via email. oshcare@silverton-ps.vic.gov.au

Bookings are due by **Friday 16th June 2023**

To secure your booking a deposit of **50%** of your total booking is required within 3 days of making your booking

No refunds or cancellations

(If restrictions change suddenly and access to the program is restricted you will be contacted.)

- PAYMENT OPTIONS:
- Direct Deposit—BSB: 063-244 Acc: 0090-1052
Ref: VAC and your child's surname
 - EFTPOS— Savings or Credit Card
 - CASH—to the Co-ordinator

Please note: The remaining 50% for your complete booking MUST be paid in full ON or BEFORE the last day of attendance